



Southcare Connect

**Stay connected and in control of your care...
when you need it most.**

Southcare Connect is exclusive to Southcare customers and family and lets you maximise your independence by controlling your services to fit your lifestyle.

Developed by our caring hands, it is a free, personalised and easy to use app.

Southcare Connect enables you to...



Manage your Care

View your upcoming and completed services on your calendar or call to hear your next service.

Plus, easily request changes and/or additional services and products to meet your care needs.



Monitor your Care Plan

See what services you have, who is in your care team and monitor your care with quick access to your care plan, invoices and statements.



Stay Connected

Connect with your circle of care team, family and chosen representatives so they can see what is happening with your care.

Plus, keep up to date with what's happening at Southcare.



Southcare Connect

Get started...

Getting started is easy, safe, secure and free.

Easy as 1, 2, 3!

1

Download the Southcare Connect App



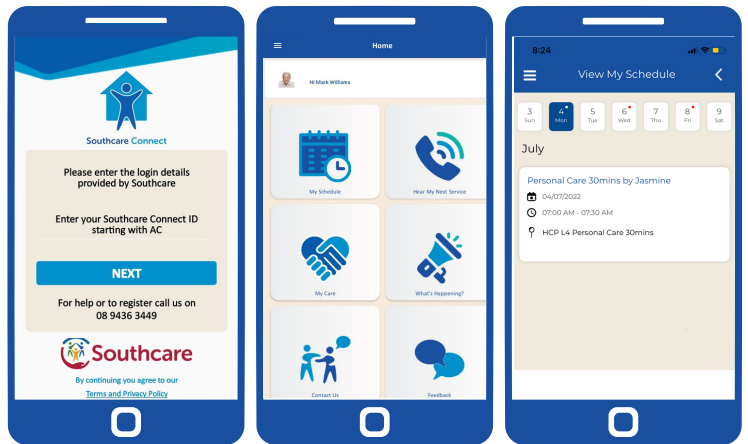
2

Sign-in

Enter your Southcare Connect ID and temporary password provided by Southcare to log into the app

3

Start connecting!



Need help connecting? Let our caring hands help

Contact the Southcare Connect Team to get started or with any questions you may have on 9436 3449 or at southcareconnect@southcare.org.au.

53 Bickley Crescent, Manning WA 6152
enquiries@southcare.org.au
6117 3029

www.southcare.org.au

